

# MESA DESCARBONIZACIÓN

DRA. PATRICIA MATUS

[pmatus@uandes.cl](mailto:pmatus@uandes.cl)

¿Hay un directo y/o real efecto de la operación de Termoeléctricas a carbón que actualmente operan en Chile sobre la salud humana?

- Efectos Directos

- Disminución de las Consultas Urgencia por causa Respiratorias
- Disminución consumo de medicamentos pacientes asmáticos
- Disminución de hospitalizaciones por causa respiratoria y cardiovascular
- Muertes evitadas

- Efectos Indirectos: debido al menor impacto sobre el sistema global

- Disminución de muertes por olas de calor/ frío
- Disminución de enfermedades respiratorias y cardiovasculares,

# ¿Existen pruebas científicas? Efectos Directos

The screenshot shows a web browser window with the URL <https://www.ncbi.nlm.nih.gov/pmc/?term=Health+effects+power+plant+air+emission>. The page is the PubMed search results interface. At the top, the search term "Health effects power plant air emission" is entered in the search bar. The results are displayed in a list format, showing 3035 items. The first five results are visible, each with a title, authors, journal information, and links to the full text, abstract, or citation. The interface includes various filters on the left (Article attributes, Text availability, etc.) and a sidebar on the right for filtering and finding related data. The search query is shown in the search details section: `("health"[MeSH Terms] OR "health"[All Fields]) AND effects[All Fields] AND ("power plants"[MeSH Terms] OR ("power"[All Fields] AND "plants"[All Fields]) OR "power"`. The taskbar at the bottom shows the time as 8:31 on 24-07-2018.

NCBI Resources How To Sign in to NCBI

PMC Health effects power plant air emission Search Help

Article attributes  
Author manuscripts  
Digitized back issues  
MEDLINE journals  
Open access  
Retracted

Text availability  
Include embargoed articles

Publication date  
1 year  
5 years  
10 years  
Custom range...

Research Funder  
NIH  
AHRQ  
ASPR  
CDC  
EPA  
FDA  
NASA  
NIST  
VA  
Customize ...

Clear all  
Show additional filters

Display Settings: Summary, 20 per page, Sorted by Default order

Send to: Filter your results:  
All (3035)  
NIH grants (703)  
Embargoed (0)  
Manage Filters

Search results  
Items: 1 to 20 of 3035

1. [Associations Between Residential Proximity to Power Plants and Adverse Birth Outcomes](#)  
Sandie Ha, Hui Hu, Jeffrey Roth, Haidong Kan, Xiaohui Xu  
Am J Epidemiol. 2015 Aug 1; 182(3): 215–224. Published online 2015 Jun 28. doi: 10.1093/aje/kwv042  
PMCID: PMC4517698  
[Article](#) [PubReader](#) [PDF-294K](#) [Citation](#)

2. [Electrocardiographic and Respiratory Responses to Coal-Fired Power Plant Emissions in a Rat Model of Acute Myocardial Infarction: Results from the Toxicological Evaluation of Realistic Emissions of Source Aerosols \(TERESA\) Study](#)  
Gregory A. Wellenius, Edgar A. Diaz, Tarun Gupta, Pablo A. Ruiz, Mark Long, Choong Min Kang, Brent A. Coull, John J. Godleski  
Inhal Toxicol. Author manuscript; available in PMC 2013 Apr 22.  
Published in final edited form as: Inhal Toxicol. 2011 Aug; 23(0 2): 84–94. Published online 2011 Mar 14.  
doi: 10.3109/08958378.2010.554461  
PMCID: PMC3632641  
[Article](#) [PubReader](#) [PDF-1.7M](#) [Citation](#)

3. [Predicted impact of thermal power generation emission control measures in the Beijing-Tianjin-Hebei region on air pollution over Beijing, China](#)  
Liqiang Wang, Pengfei Li, Shaocai Yu, Khalid Mehmood, Zhen Li, Shucheng Chang, Weiping Liu, Daniel Rosenfeld, Richard C. Flagan, John H. Seinfeld  
Sci Rep. 2018; 8: 934. Published online 2018 Jan 17. doi: 10.1038/s41598-018-19481-0  
PMCID: PMC5772530  
[Article](#) [PubReader](#) [PDF-2.0M](#) [Citation](#)

4. [Toxicological Evaluation of Realistic Emission Source Aerosols \(TERESA\)—Power plant studies: assessment of breathing pattern](#)  
Edgar A. Diaz, Miriam Lemos, Brent Coull, Mark S. Long, Annette C. Rohr, Pablo Ruiz, Tarun Gupta, Choong-Min Kang, John J. Godleski  
Inhal Toxicol. Author manuscript; available in PMC 2013 Jul 8.  
Published in final edited form as: Inhal Toxicol. 2011 Aug; 23(0 2): 42–59. Published online 2011 Jun 3.  
doi: 10.3109/08958378.2010.578169  
PMCID: PMC3704077  
[Article](#) [PubReader](#) [PDF-3.2M](#) [Citation](#)

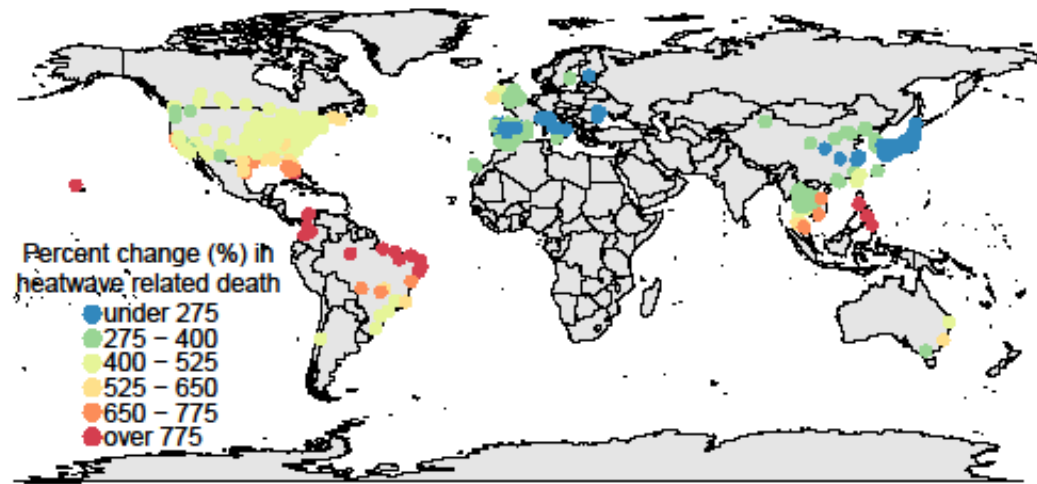
5. [Mercury pollution in vegetables, grains and soils from areas surrounding coal-fired power plants](#)  
Rui Li, Han Wu, Jing Ding, Weimin Fu, Lijun Gan, Yi Li  
Sci Rep. 2017; 7: 46545. Published online 2017 May 9. doi: 10.1038/srep46545  
PMCID: PMC5422849  
[Article](#) [PubReader](#) [PDF-658K](#) [Citation](#)

Find related data  
Database: Select  
Find items

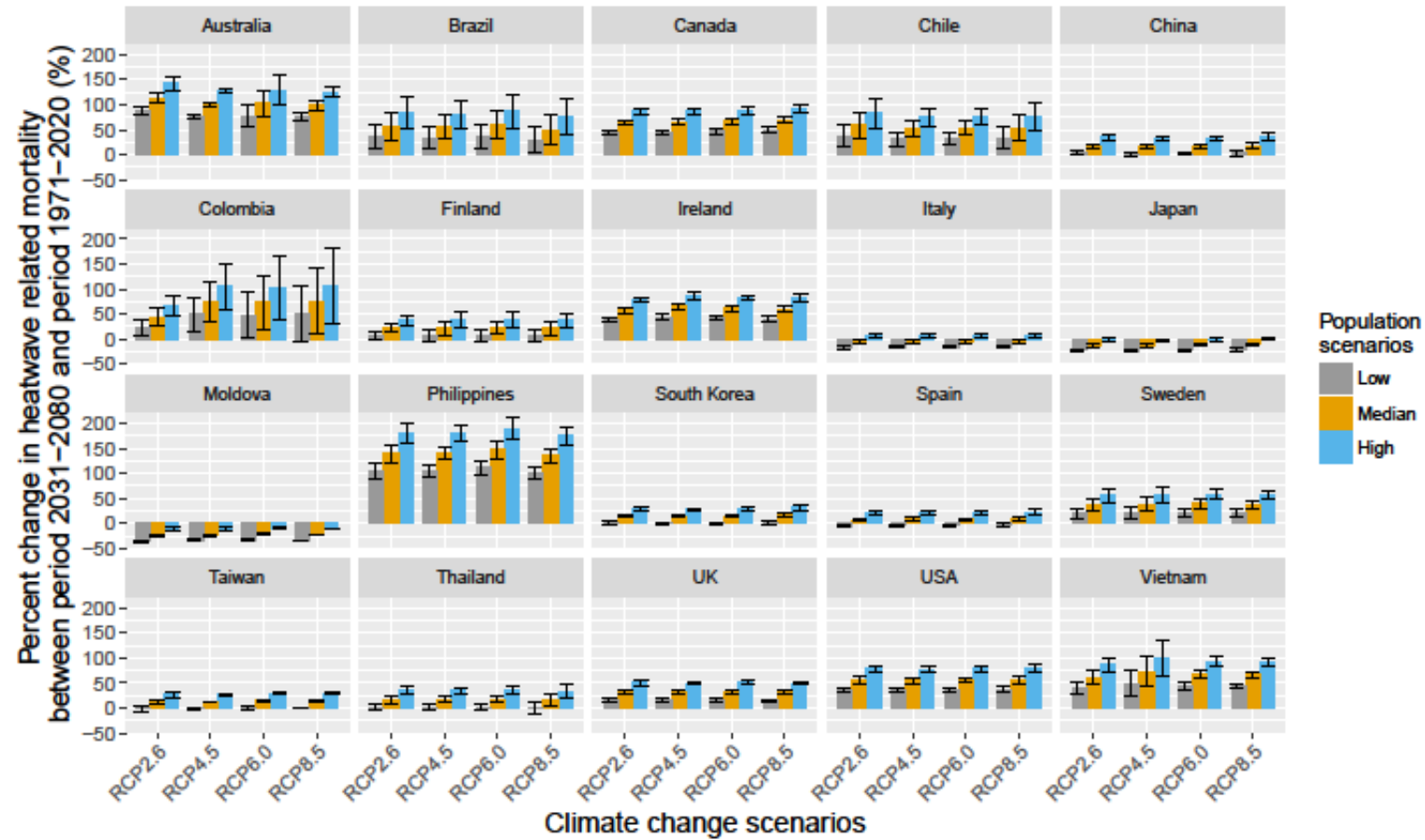
Search details  
Search See more...  
["health"[MeSH Terms] OR "health"[All Fields]) AND effects[All Fields] AND ("power plants"[MeSH Terms] OR ("power"[All Fields] AND "plants"[All Fields]) OR "power"

Recent activity  
Turn Off Clear  
Health effects power plant air emission (3035) PMC  
[Predictors of remission from major depressive disorder in secondary care] PubMed  
cohort study and Chile AND (free full text[sb] AND Humans[Mesh]) (1260) PubMed  
cohort study AND (free full text[sb] AND Humans[Mesh]) (432953) PubMed  
cohort study AND (free full text[sb]) (464174) PubMed  
See more...

# Efectos Ecológicos



# Efectos Ecológicos



# Efectos Ecológicos

Figure 2. Associations between the indicators and heat and cold AF%. Results are expressed as AF% change and 95%CI for SD increase of the indicators.

